

SWEDEN

— BEACH PALACE —

A Private Guided Tour





Sweden

A kingdom of second homes

With just 10 extraordinary beachfront palaces, each with their own private white sandy beach and exotic lush gardens, Sweden Island offers the ultimate privacy and relaxation in palatial settings.

The ambience will be refined and exclusive, with carefully curated events exclusive to the residents. Each estate is a fairytale Maldivian castle offering enchanting sea views.

Influenced by the Swedish architecture and lifestyle, the Palaces offer 6 floors enveloped in a private, secluded exotic garden with the surrounding unspoiled beach, 7 bedrooms, a sauna and a snow room and a grand reception room with a striking wall of windows on the top floor offering mesmerising views of the seascape and the islands.



PALACE FEATURES


TOP FLOOR PARTY ROOM
WITH GLASS ROOF


ROOF DECK &
360° VIEWS


MATERIALS SOURCED
FROM EUROPE


7 BEDROOMS


SNOW AND
SAUNA ROOMS


CORAL REEFS
GARDENS


PRIVATE BEACH
& OCEAN


EXOTIC GARDENS


BENTLEY
HOME
FURNISHED BY
BENTLEY HOME


PRIVATE GYM
AND SPA

THE HEART OF EUROPE KEY PRINCIPLES

Attention to details

- European themed interior design.
- Bathrooms with waterproofing layers to prevent water stagnation.
- Thermally insulated roof and façade walls.
- Tiles and floor materials thoroughly checked to prevent color variation.
- Immersive landscape areas with relaxation/recreational features.

Innovative design & Feng Shui

- Windows with double glazing to ensure acoustic and heat insulation.
- Electronic dimmer controls in living, dining and bedrooms.
- Solar powered water heating system.
- Landscaping & jungles inspired by Europe and the Maldives.
- Projects constructed and landscaped using Feng Shui practices.

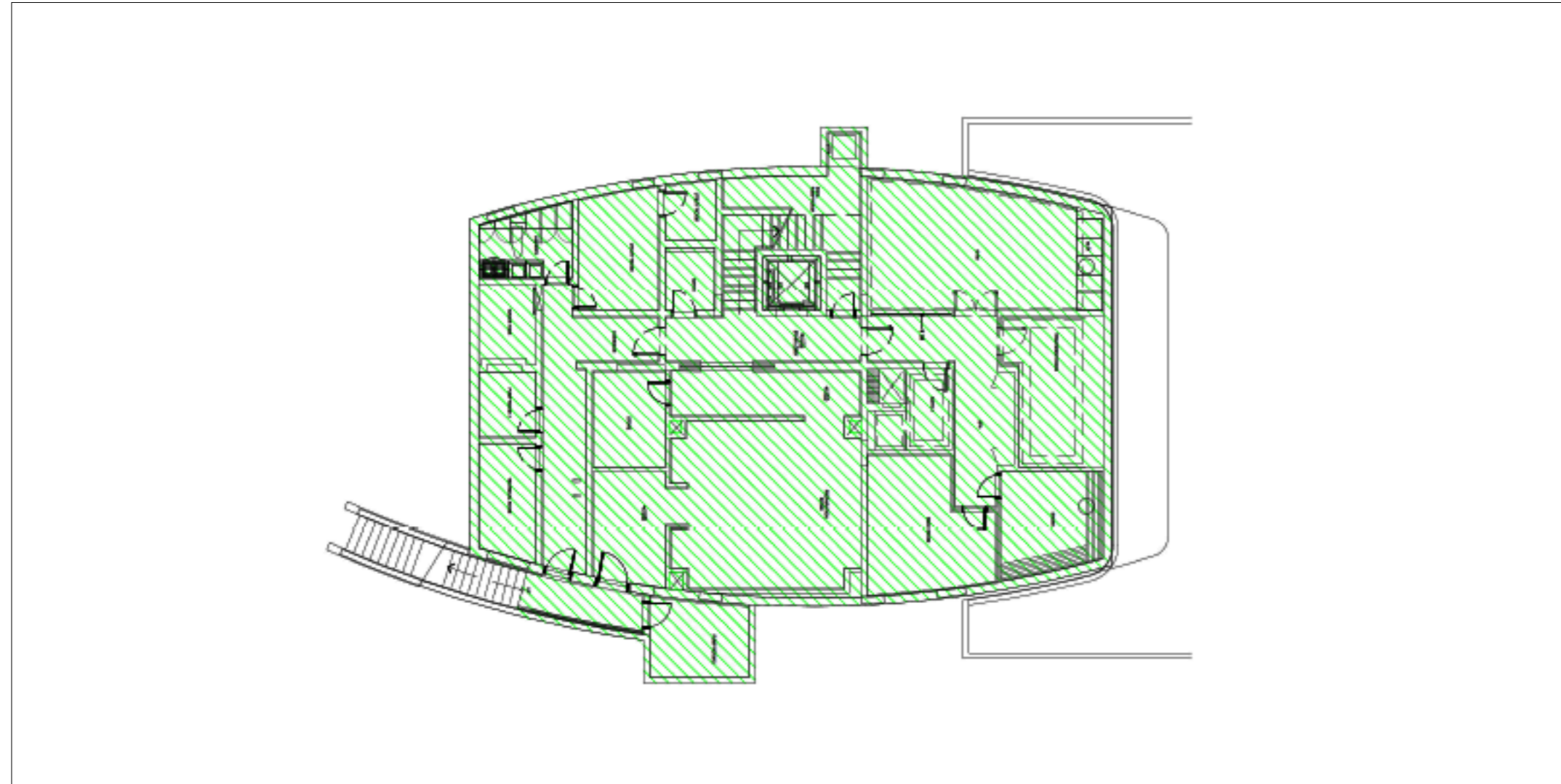
Craftsmanship

- Bathrooms horizontal surfaces with high resilience ensuring no chipping.
- Swimming pools decks with non-slippery materials.
- Carpentry works with timber & oak finish.
- Tempered glass used for balustrade and partition.
- 100 years life time.

Sustainability

- Pesticides and fungicides free gardens with 60+ plants species.
- Solar powered homes & swimming pools & Raining Street (CO2 free).
- Coral Institute rehabilitates coral reefs and marine life from the Arabian Gulf.
- Car free environment & sustainable ferry.
- Zero discharge project.

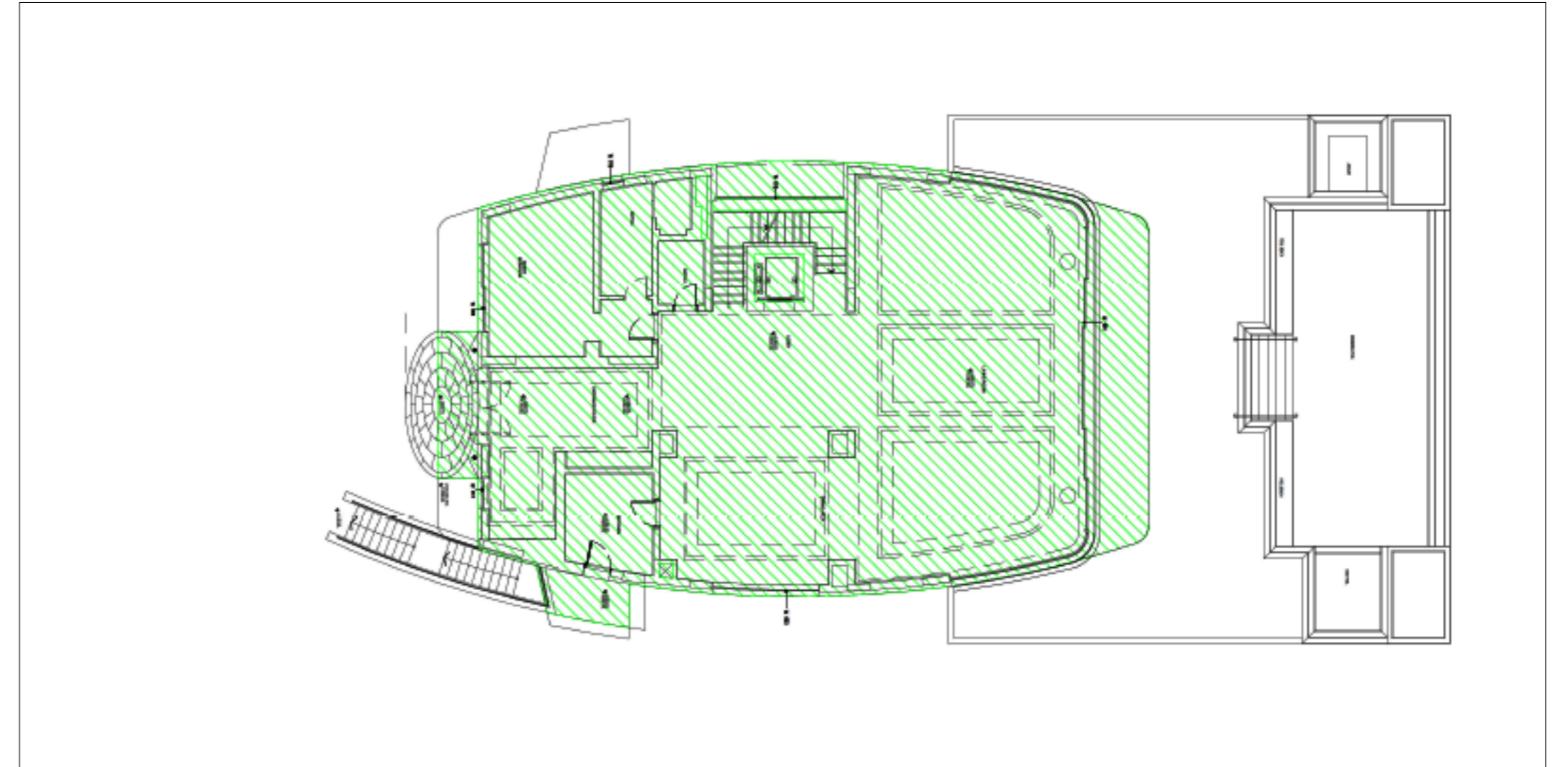
SWEDEN BEACH PALACE - 6 FLOORS



Lower Ground Floor Area: 349 sq.m | 3,753 sq.ft
Total Built-up Area: 1,927.17 sq.m | 20,743 sq.ft
Total Plot Area: tbc sq.m | tbc sq.ft

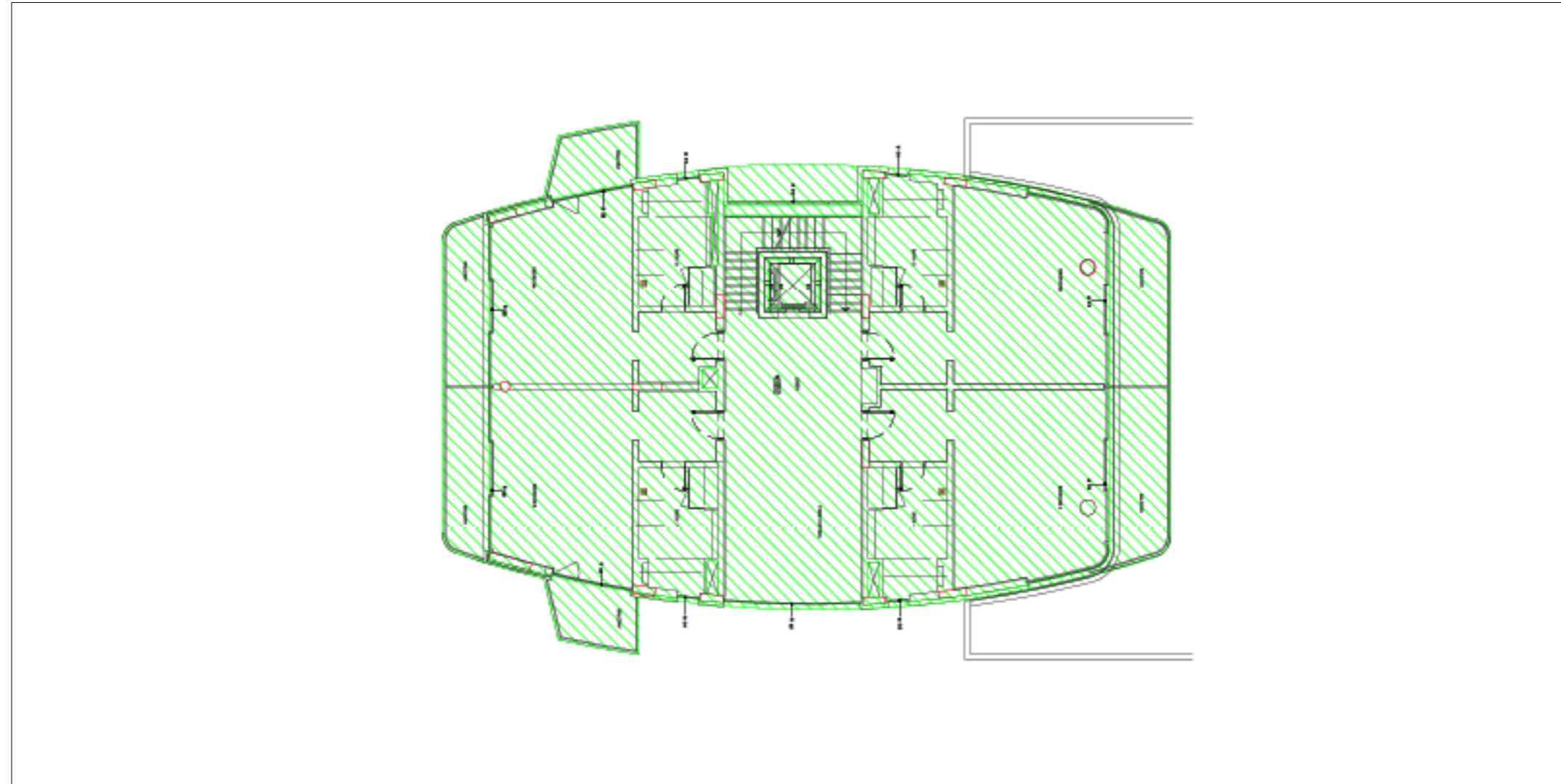
Gym | Massage Room | Sauna | Snow Room | Gym Bathroom | Chef Kitchen | Storage Rooms | Staff Q uarter

SWEDEN BEACH PALACE - 6 FLOORS



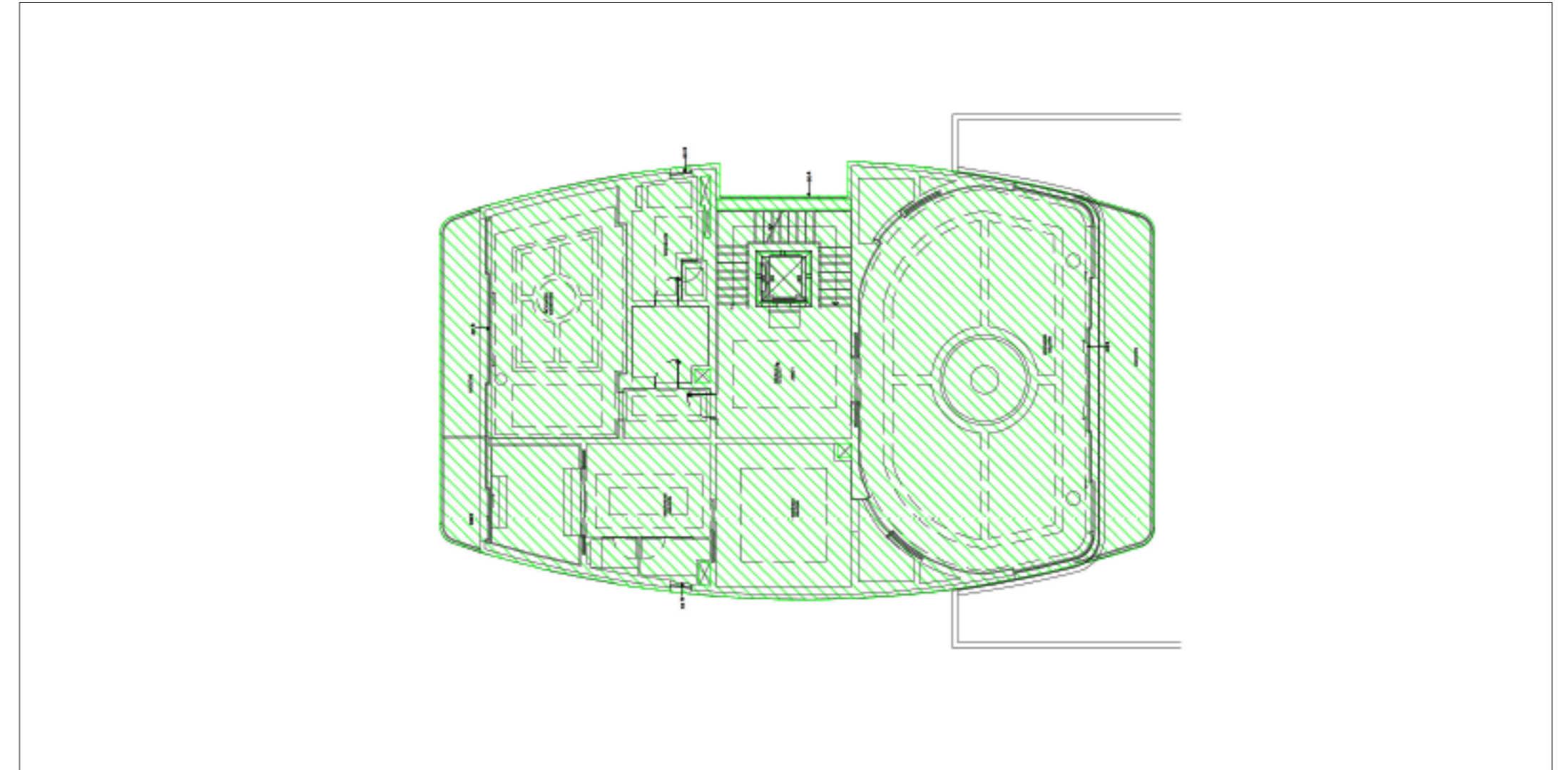
Ground Floor Area: 363 sq.m | 3,907 sq.ft

Terrace | Outdoor Lounge Area | Infinity Swimming Pool | Kids' Pool | Jacuzzi | Private Beach | Private Garden | Guest Bedroom | En-suite Bathroom | Guest Toilet | Living Room & Dining Room | Serving Kitchen | Elevator | Double Staircases



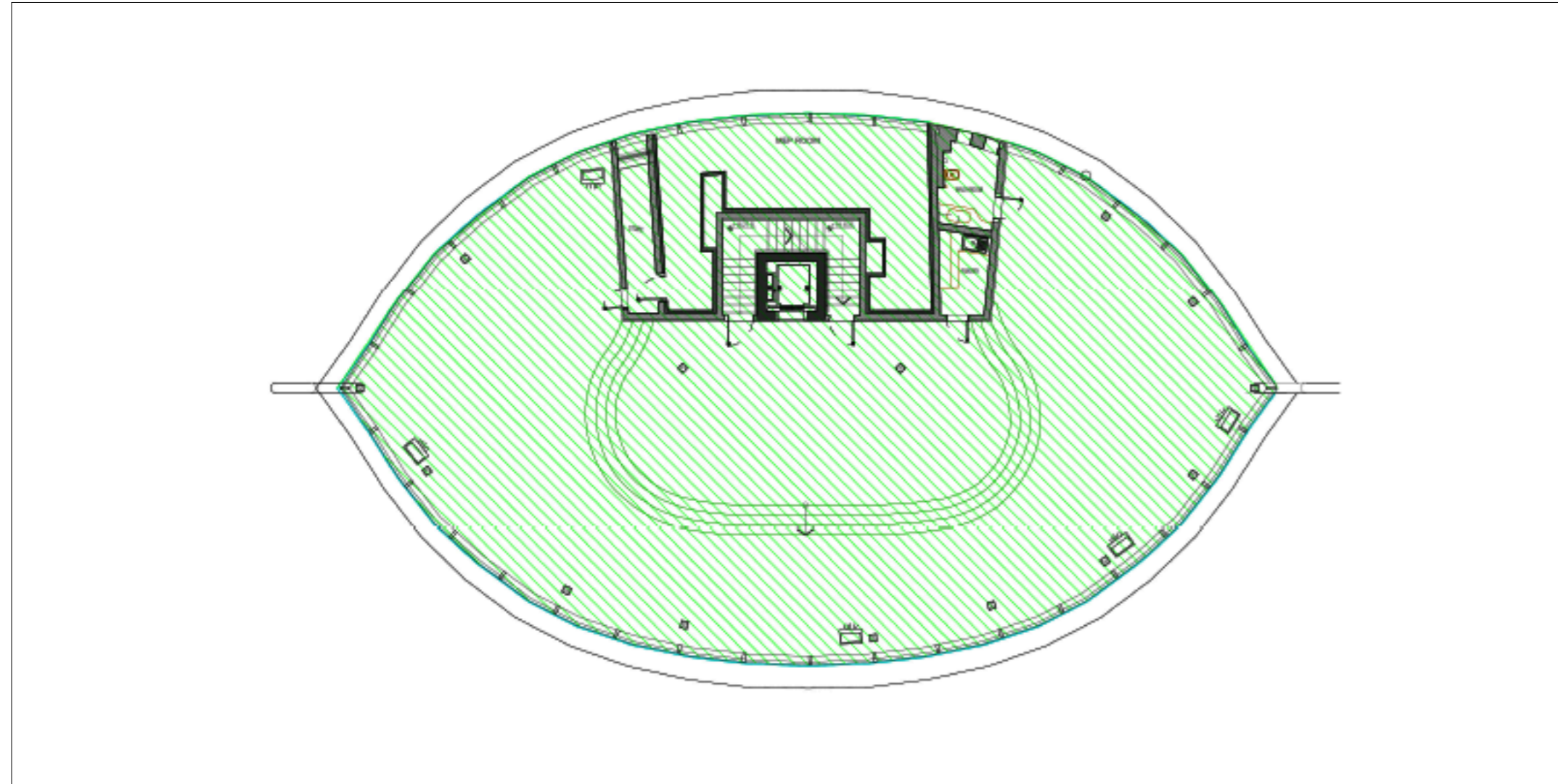
Mezzanine Floor Area: 381 sq.m | 4,097 sq.ft

Bedroom 2 | En-suite Lounge Area & Bathroom & Walk-in Closet & Viewing Deck | Bedroom 3 | En-suite Bathroom & Walk-in Closet & Viewing Deck | Bedroom 4 | En-suite Bathroom & Walk-in Closet & Viewing Deck | Bedroom 5 | En-suite Bathroom & Walk-in Closet & Viewing Deck | Lounge Area | Elevator | Double Staircases



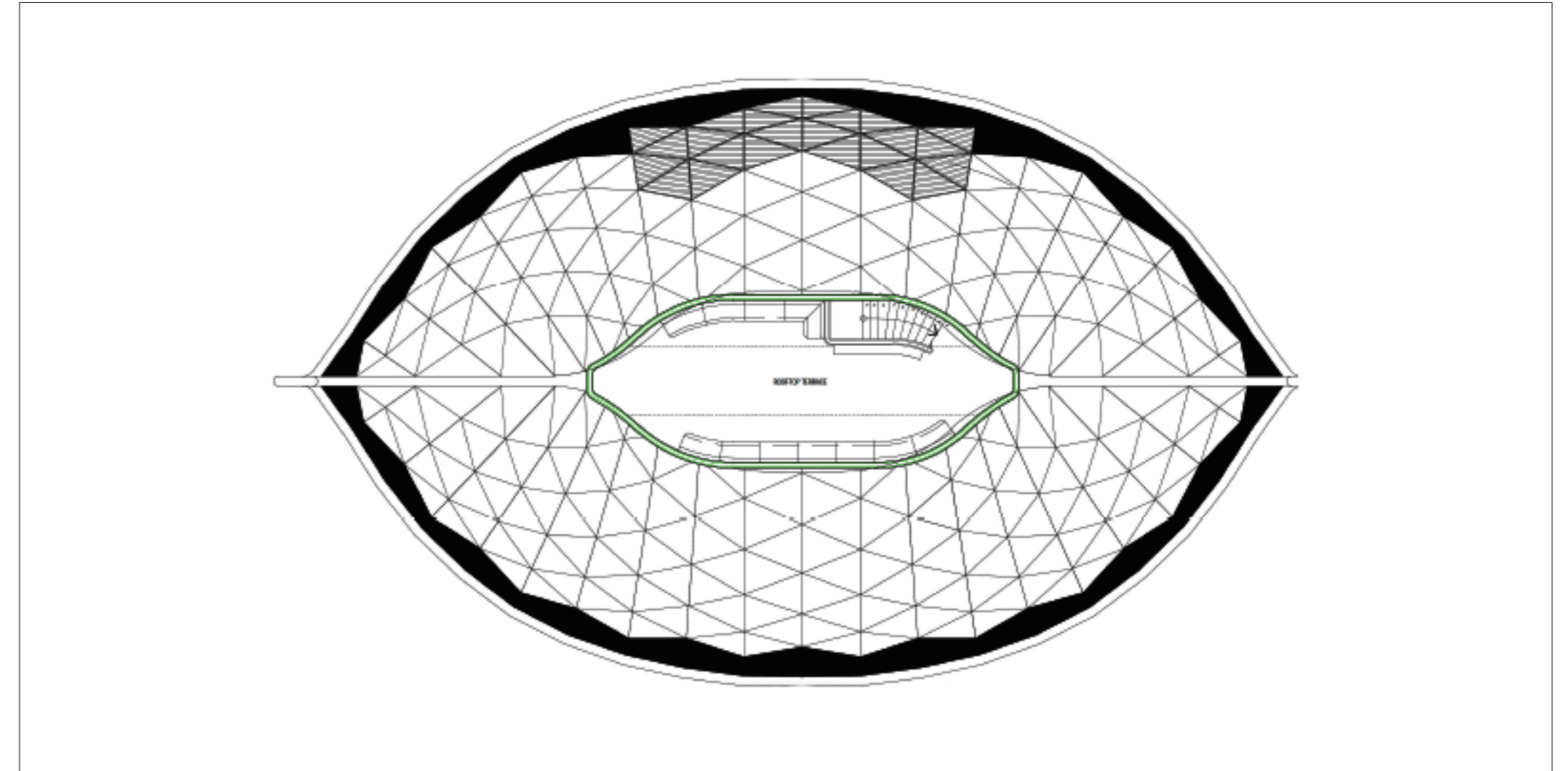
First Floor Area: 362 sq.m | 3,899 sq.ft

Master Bedroom | En-suite Lounge Area & Bathroom & 2 Walk-in Closets & Jacuzzi & Viewing Deck | Bedroom 7 | En-suite Bathroom & Walk-in Closet & Viewing Deck | Lounge Area | Elevator | Double Staircases



Top Floor Area: 473 sq.m | 5,088 sq.ft

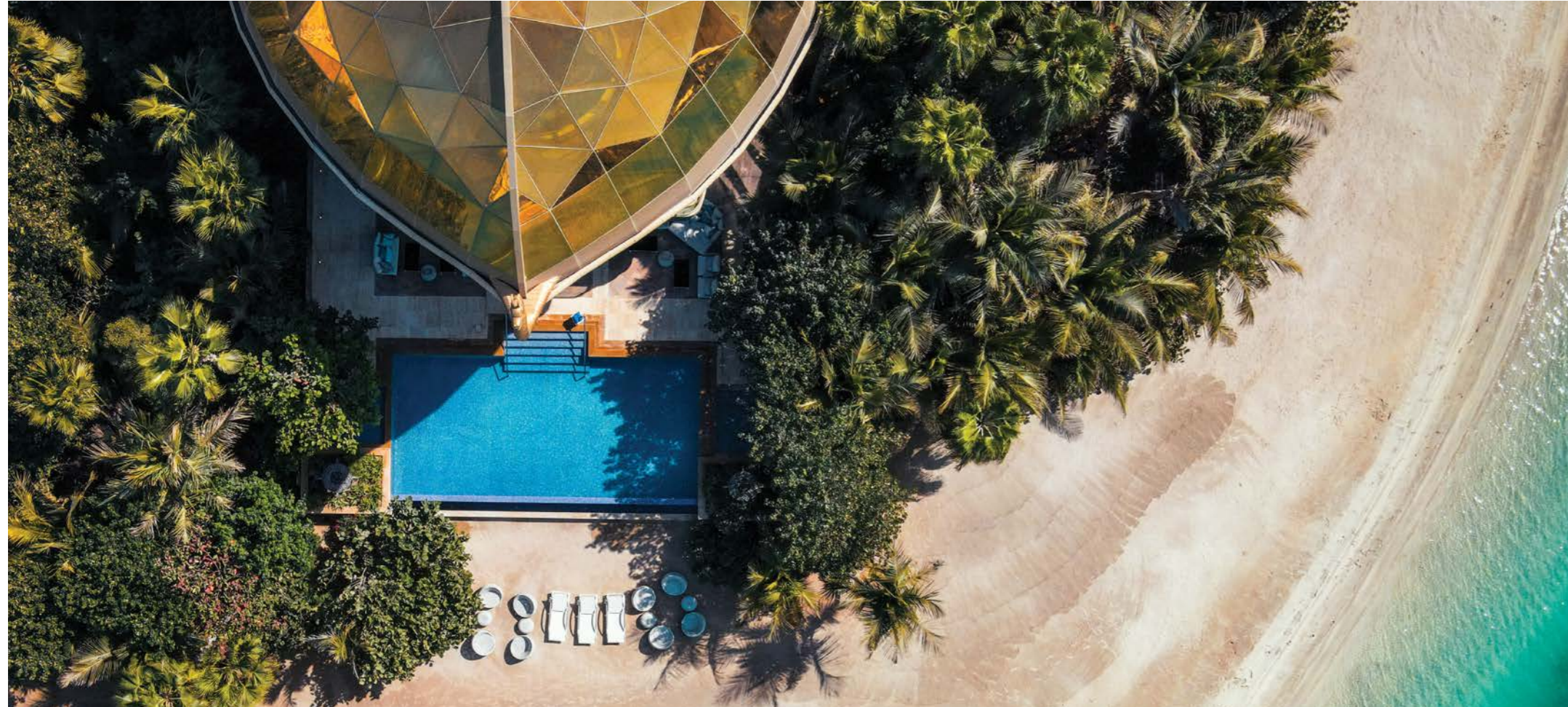
Party & Chill out full floor | Guests Capacity 300 | Floor to Ceiling Windows | Vaulted Ceiling | Design Inspired by Swedish Viking Vessel
360* Views | Pantry | Guest Bathroom | Elevator | Double Staircases | Access to Roof Deck



Roof Deck Area: 77 sq.m | 827 sq.ft

360* Views | Outdoor Majilis | Wooden Floors | Vessel Hull Shaped Deck

SWEDEN BEACH PALACE



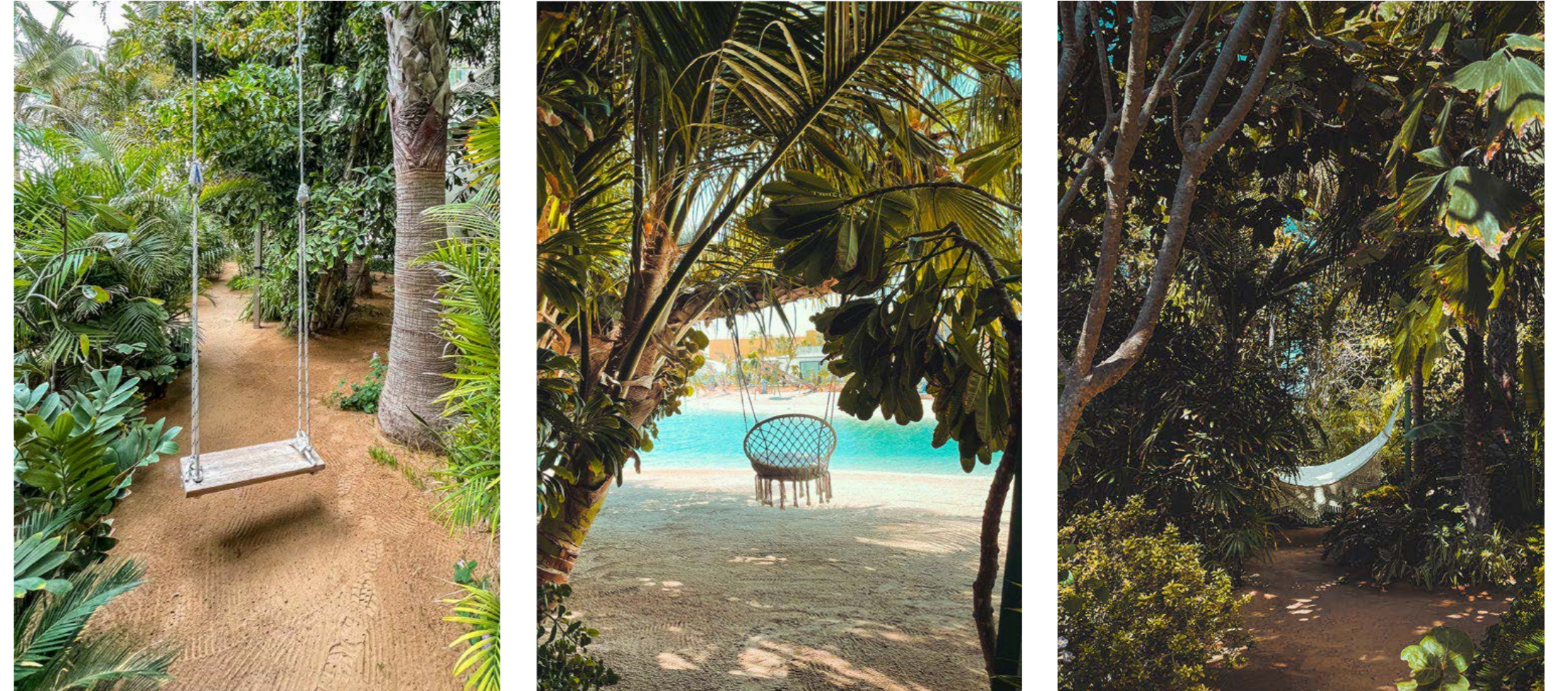
SWEDEN BEACH PALACE



SWEDEN BEACH PALACE



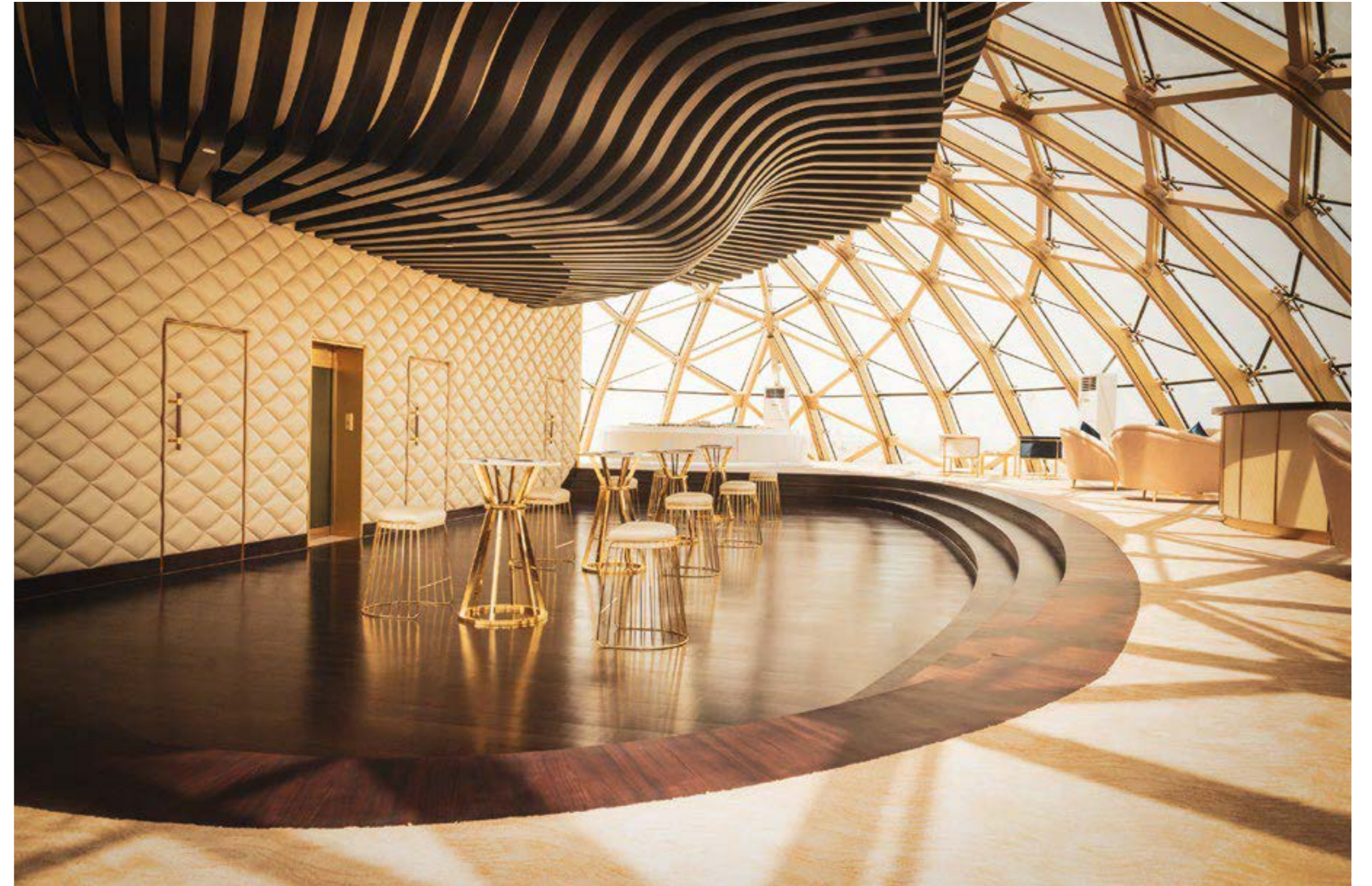
SWEDEN BEACH PALACE



SWEDEN BEACH PALACE



SWEDEN BEACH PALACE



SWEDEN BEACH PALACE



SWEDEN BEACH PALACE



SWEDEN BEACH PALACE



SWEDEN BEACH PALACE





THE WORLD
DUBAI

MARKETING & MEDIA ENQUIRIES

Delphine Cazals

delphine.cazals@kleindienst.ae

+971 4 818 14 81 | +971 50 256 78 37

THE HEART OF EUROPE
SALES GALLERY

The Heart of Europe
The World
Dubai, United Arab Emirates

800 EUROPE
+971 4 814 14 81
thoe.com

